



NATIONAL TECHNICAL SYSTEMS

NTS Test Report Number: 41132-08.BBP
Revision 1

Test Data for the
Incase Neoprene Sleeve and
BBP Breathe Sleeve

PREPARED BY: National Technical Systems
36 Gilbert Street South
Tinton Falls, NJ 07701



TABLE OF CONTENTS

1.0	Test Procedure	3
2.0	Test Results	6



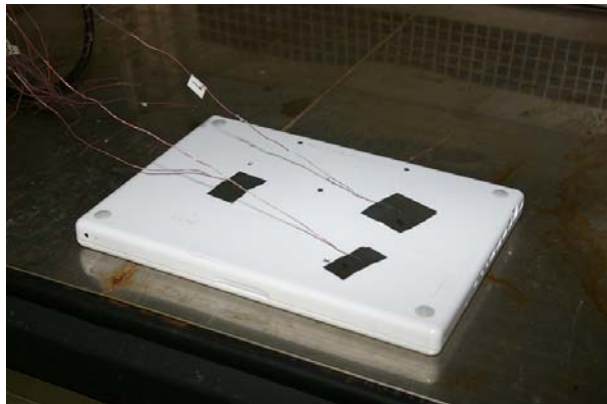
1.0 Test Procedure

3 thermocouples were attached to the laptop. One was on the battery, another near the CPU, and a third in an open area not near the other 2.

The laptop was inserted into a sleeve and the chamber was set to 68-80°C

The chamber was heated with the products until the thermocouples were around 68°C. The chamber was then set to 20°C to cool down. The laptop was allowed to cool to around 38°C recording the elapsed time and logging temperature.

The test procedure was repeated for both sleeves.







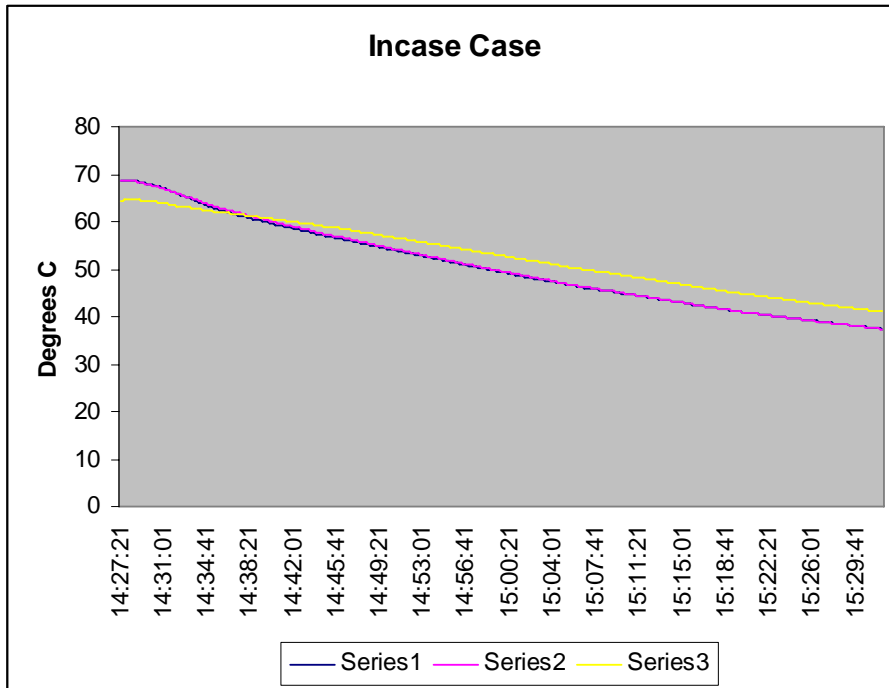
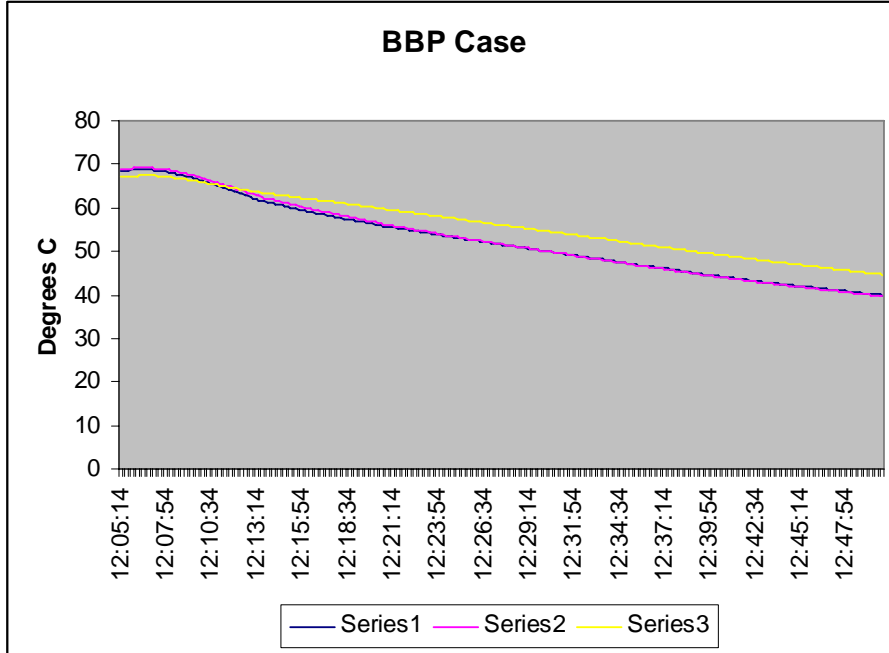
2.0 Test Results

It took 40 minutes for the laptop to go from 68°C to 40°C with the BBP Sleeve vs. the Incase Sleeve taking 53 minutes to cool down to the same temperature.

See attached test data and plots.

The following table shows the time that it took for the laptop to cool from 67°C(153°F) to 43°C(109°F) in the BBP sleeve vs. the Incase sleeve. The data indicates the laptop cooled 25% faster in the BBP sleeve vs. the Incase sleeve during the overall test period.

Avg. Temperature Change	Incase	BBP	%Diff
67°C(153°F) to 61°C(142°F)	9Mins	6Mins	33%
61°C(142°F) to 55°C(131°F)	12Mins	9Mins	25%
55°C(131°F) to 49°C(120°F)	12Mins	10Mins	17%
49°C(120°F) to 43°C(109°F)	15Mins	11Mins	27%
67°C(153°F) to 43°C(109°F)	48Mins	36Mins	25%





Incase Data

Time	CPU	Case	Battery
14:27:21	68.804	68.611	64.456
14:27:31	68.807	68.605	64.491
14:27:41	68.795	68.617	64.54
14:27:51	68.757	68.576	64.543
14:28:01	68.714	68.544	64.561
14:28:11	68.65	68.492	64.566
14:28:21	68.669	68.515	64.609
14:28:31	68.634	68.5	64.616
14:28:41	68.593	68.442	64.561
14:28:51	68.486	68.36	64.538
14:29:01	68.428	68.279	64.517
14:29:11	68.338	68.192	64.471
14:29:21	68.239	68.087	64.436
14:29:31	68.149	68.003	64.369
14:29:41	68.038	67.898	64.323
14:29:51	67.919	67.793	64.253
14:30:01	67.826	67.674	64.221
14:30:11	67.721	67.584	64.174
14:30:21	67.609	67.489	64.138
14:30:31	67.498	67.378	64.084
14:30:41	67.367	67.25	64.026
14:30:51	67.209	67.124	63.962
14:31:01	67.061	66.993	63.872
14:31:11	66.916	66.836	63.805
14:31:21	66.759	66.708	63.735
14:31:31	66.59	66.557	63.665
14:31:41	66.427	66.4	63.578
14:31:51	66.259	66.255	63.494
14:32:01	66.084	66.095	63.412
14:32:11	65.91	65.953	63.311
14:32:21	65.73	65.778	63.261
14:32:31	65.604	65.694	63.234
14:32:41	65.484	65.568	63.209
14:32:51	65.318	65.411	63.116
14:33:01	65.127	65.26	63.052
14:33:11	64.961	65.12	62.983
14:33:21	64.781	64.952	62.907
14:33:31	64.624	64.812	62.84
14:33:41	64.455	64.667	62.75
14:33:51	64.287	64.513	62.695
14:34:01	64.103	64.37	62.645



NATIONAL TECHNICAL SYSTEMS

NTS Test Report Number: 41132-08.BBP

Revision 1

Time	CPU	Case	Battery
14:34:11	63.935	64.239	62.584
14:34:21	63.789	64.068	62.509
14:34:31	63.651	63.947	62.429
14:34:41	63.509	63.805	62.4
14:34:51	63.309	63.655	62.31
14:35:01	63.181	63.519	62.26
14:35:11	62.994	63.377	62.205
14:35:21	62.86	63.249	62.147
14:35:31	62.715	63.129	62.092
14:35:41	62.59	63.022	62.022
14:35:51	62.438	62.888	61.967
14:36:01	62.299	62.766	61.923
14:36:11	62.188	62.618	61.888
14:36:21	62.063	62.519	61.83
14:36:31	61.944	62.403	61.769
14:36:41	61.822	62.281	61.691
14:36:51	61.688	62.173	61.665
14:37:01	61.613	62.073	61.608
14:37:11	61.47	61.951	61.559
14:37:21	61.348	61.824	61.511
14:37:31	61.281	61.77	61.502
14:37:41	61.196	61.679	61.451
14:37:51	61.077	61.571	61.407
14:38:01	61	61.475	61.36
14:38:11	60.892	61.364	61.325
14:38:21	60.791	61.271	61.27
14:38:31	60.664	61.168	61.223
14:38:41	60.548	61.058	61.158
14:38:51	60.441	60.925	61.09
14:39:01	60.361	60.838	61.024
14:39:11	60.245	60.725	60.968
14:39:21	60.141	60.624	60.932
14:39:31	60.031	60.529	60.861
14:39:41	59.907	60.397	60.815
14:39:51	59.815	60.299	60.75
14:40:01	59.698	60.186	60.676
14:40:11	59.569	60.063	60.592
14:40:21	59.455	59.932	60.545
14:40:31	59.345	59.834	60.468
14:40:41	59.253	59.739	60.414
14:40:51	59.21	59.684	60.382
14:41:01	59.153	59.596	60.37



NATIONAL TECHNICAL SYSTEMS

NTS Test Report Number: 41132-08.BBP

Revision 1

Time	CPU	Case	Battery
14:41:11	59.064	59.512	60.326
14:41:21	58.951	59.399	60.257
14:41:31	58.862	59.295	60.192
14:41:41	58.773	59.215	60.12
14:41:51	58.651	59.105	60.061
14:42:01	58.565	59.004	59.99
14:42:11	58.443	58.897	59.924
14:42:21	58.369	58.796	59.874
14:42:31	58.259	58.686	59.8
14:42:41	58.173	58.597	59.746
14:42:51	58.06	58.478	59.696
14:43:01	58.035	58.457	59.662
14:43:11	57.987	58.397	59.639
14:43:21	57.91	58.257	59.597
14:43:31	57.796	58.179	59.516
14:43:41	57.703	58.089	59.433
14:43:51	57.555	57.94	59.351
14:44:01	57.45	57.836	59.288
14:44:11	57.358	57.729	59.211
14:44:21	57.254	57.631	59.148
14:44:31	57.17	57.562	59.077
14:44:41	57.066	57.437	59.011
14:44:51	56.983	57.345	58.964
14:45:01	56.897	57.256	58.887
14:45:11	56.79	57.152	58.83
14:45:21	56.698	57.045	58.771
14:45:31	56.623	56.988	58.719
14:45:41	56.549	56.91	58.646
14:45:51	56.525	56.875	58.632
14:46:01	56.432	56.774	58.578
14:46:11	56.367	56.697	58.518
14:46:21	56.245	56.587	58.444
14:46:31	56.183	56.483	58.375
14:46:41	56.093	56.39	58.319
14:46:51	56.004	56.316	58.236
14:47:01	55.908	56.22	58.179
14:47:11	55.816	56.122	58.11
14:47:21	55.719	56.006	58.024
14:47:31	55.607	55.92	57.946
14:47:41	55.529	55.828	57.901
14:47:51	55.431	55.737	57.813
14:48:01	55.33	55.66	57.754



NATIONAL TECHNICAL SYSTEMS

NTS Test Report Number: 41132-08.BBP
Revision 1

Time	CPU	Case	Battery
14:48:11	55.241	55.547	57.674
14:48:21	55.155	55.449	57.605
14:48:31	55.054	55.36	57.537
14:48:41	54.983	55.259	57.463
14:48:51	54.873	55.178	57.388
14:49:01	54.822	55.083	57.344
14:49:11	54.721	55.003	57.261
14:49:21	54.614	54.911	57.183
14:49:31	54.534	54.819	57.121
14:49:41	54.445	54.727	57.05
14:49:51	54.361	54.649	56.972
14:50:01	54.272	54.563	56.913
14:50:11	54.186	54.459	56.842
14:50:21	54.091	54.388	56.773
14:50:31	54.008	54.272	56.69
14:50:41	53.928	54.209	56.636
14:50:51	53.838	54.094	56.577
14:51:01	53.761	54.025	56.5
14:51:11	53.672	53.933	56.428
14:51:21	53.574	53.841	56.351
14:51:31	53.509	53.761	56.286
14:51:41	53.393	53.663	56.22
14:51:51	53.306	53.571	56.152
14:52:01	53.223	53.467	56.093
14:52:11	53.14	53.398	56.006
14:52:21	53.051	53.303	55.938
14:52:31	52.956	53.214	55.855
14:52:41	52.871	53.156	55.785
14:52:51	52.823	53.068	55.762
14:53:01	52.763	52.996	55.693
14:53:11	52.695	52.934	55.637
14:53:21	52.581	52.836	55.56
14:53:31	52.495	52.744	55.48
14:53:41	52.411	52.667	55.391
14:53:51	52.322	52.572	55.325
14:54:01	52.23	52.467	55.263
14:54:11	52.156	52.39	55.21
14:54:21	52.073	52.304	55.12
14:54:31	51.974	52.209	55.058
14:54:41	51.891	52.123	54.972
14:54:51	51.811	52.04	54.903
14:55:01	51.704	51.95	54.85



NATIONAL TECHNICAL SYSTEMS

NTS Test Report Number: 41132-08.BBP

Revision 1

Time	CPU	Case	Battery
14:55:11	51.618	51.832	54.758
14:55:21	51.555	51.769	54.698
14:55:31	51.437	51.674	54.603
14:55:41	51.359	51.588	54.538
14:55:51	51.3	51.514	54.461
14:56:01	51.196	51.407	54.383
14:56:11	51.107	51.326	54.333
14:56:21	51.029	51.243	54.253
14:56:31	50.946	51.157	54.175
14:56:41	50.845	51.068	54.083
14:56:51	50.768	50.967	54.018
14:57:01	50.679	50.901	53.941
14:57:11	50.601	50.797	53.896
14:57:21	50.5	50.723	53.804
14:57:31	50.42	50.637	53.735
14:57:41	50.343	50.539	53.655
14:57:51	50.245	50.467	53.593
14:58:01	50.153	50.387	53.524
14:58:11	50.087	50.28	53.438
14:58:21	50.031	50.229	53.39
14:58:31	49.937	50.16	53.332
14:58:41	49.805	50.02	53.224
14:58:51	49.769	49.972	53.192
14:59:01	49.707	49.891	53.147
14:59:11	49.638	49.834	53.075
14:59:21	49.555	49.757	52.971
14:59:31	49.472	49.676	52.944
14:59:41	49.391	49.584	52.843
14:59:51	49.314	49.498	52.772
15:00:01	49.222	49.415	52.725
15:00:11	49.145	49.335	52.629
15:00:21	49.061	49.248	52.576
15:00:31	48.975	49.162	52.487
15:00:41	48.918	49.097	52.427
15:00:51	48.82	49.003	52.341
15:01:01	48.735	48.936	52.282
15:01:11	48.686	48.829	52.216
15:01:21	48.577	48.765	52.142
15:01:31	48.51	48.674	52.074
15:01:41	48.412	48.586	51.988
15:01:51	48.33	48.507	51.937
15:02:01	48.233	48.44	51.857



NATIONAL TECHNICAL SYSTEMS

NTS Test Report Number: 41132-08.BBP

Revision 1

Time	CPU	Case	Battery
15:02:11	48.175	48.339	51.791
15:02:21	48.105	48.278	51.726
15:02:31	48.011	48.187	51.678
15:02:41	47.947	48.108	51.583
15:02:51	47.862	48.023	51.524
15:03:01	47.795	47.956	51.441
15:03:11	47.722	47.855	51.378
15:03:21	47.636	47.807	51.316
15:03:31	47.557	47.706	51.239
15:03:41	47.481	47.651	51.191
15:03:51	47.396	47.572	51.117
15:04:01	47.323	47.478	51.031
15:04:11	47.259	47.393	50.98
15:04:21	47.198	47.307	50.912
15:04:31	47.11	47.253	50.834
15:04:41	47.019	47.162	50.752
15:04:51	46.961	47.089	50.687
15:05:01	46.868	47.002	50.615
15:05:11	46.78	46.906	50.53
15:05:21	46.672	46.824	50.456
15:05:31	46.62	46.723	50.385
15:05:41	46.531	46.685	50.314
15:05:51	46.483	46.599	50.257
15:06:01	46.395	46.51	50.179
15:06:11	46.316	46.45	50.114
15:06:21	46.24	46.367	50.058
15:06:31	46.179	46.294	49.971
15:06:41	46.07	46.243	49.924
15:06:51	46.018	46.142	49.853
15:07:01	45.99	46.104	49.8
15:07:11	45.956	46.09	49.779
15:07:21	45.916	46.016	49.74
15:07:31	45.855	45.946	49.669
15:07:41	45.767	45.895	49.604
15:07:51	45.688	45.813	49.538
15:08:01	45.621	45.718	49.464
15:08:11	45.542	45.621	49.378
15:08:21	45.496	45.584	49.303
15:08:31	45.465	45.54	49.295
15:08:41	45.465	45.51	49.286
15:08:51	45.389	45.465	49.202
15:09:01	45.31	45.386	49.137



NATIONAL TECHNICAL SYSTEMS

NTS Test Report Number: 41132-08.BBP

Revision 1

Time	CPU	Case	Battery
15:09:11	45.237	45.313	49.071
15:09:21	45.154	45.209	48.998
15:09:31	45.074	45.117	48.908
15:09:41	44.989	45.063	48.842
15:09:51	44.881	44.957	48.742
15:10:01	44.826	44.91	48.692
15:10:11	44.819	44.89	48.668
15:10:21	44.78	44.847	48.645
15:10:31	44.722	44.782	48.575
15:10:41	44.655	44.703	48.517
15:10:51	44.597	44.627	48.431
15:11:01	44.518	44.573	48.371
15:11:11	44.445	44.49	48.291
15:11:21	44.363	44.414	48.231
15:11:31	44.317	44.35	48.164
15:11:41	44.232	44.268	48.091
15:11:51	44.186	44.213	48.024
15:12:01	44.11	44.153	47.966
15:12:11	44.016	44.079	47.896
15:12:21	43.973	44.006	47.829
15:12:31	43.918	43.946	47.783
15:12:41	43.836	43.872	47.698
15:12:51	43.778	43.809	47.637
15:13:01	43.717	43.751	47.585
15:13:11	43.647	43.684	47.491
15:13:21	43.599	43.614	47.439
15:13:31	43.547	43.55	47.363
15:13:41	43.483	43.486	47.33
15:13:51	43.407	43.44	47.254
15:14:01	43.34	43.352	47.202
15:14:11	43.267	43.288	47.135
15:14:21	43.221	43.239	47.05
15:14:31	43.148	43.176	47.004
15:14:41	43.081	43.118	46.946
15:14:51	42.999	43.018	46.854
15:15:01	42.947	42.975	46.815
15:15:11	42.896	42.92	46.755
15:15:21	42.798	42.814	46.671
15:15:31	42.744	42.744	46.605
15:15:41	42.629	42.649	46.489
15:15:51	42.536	42.563	46.391
15:16:01	42.486	42.495	46.356



NATIONAL TECHNICAL SYSTEMS

NTS Test Report Number: 41132-08.BBP

Revision 1

Time	CPU	Case	Battery
15:16:11	42.44	42.425	46.289
15:16:21	42.353	42.362	46.217
15:16:31	42.303	42.324	46.152
15:16:41	42.239	42.248	46.106
15:16:51	42.206	42.203	46.042
15:17:01	42.124	42.129	45.994
15:17:11	42.072	42.053	45.948
15:17:21	42.02	42.02	45.878
15:17:31	41.918	41.946	45.781
15:17:41	41.874	41.866	45.718
15:17:51	41.771	41.809	45.656
15:18:01	41.722	41.752	45.586
15:18:11	41.681	41.698	45.545
15:18:21	41.599	41.619	45.476
15:18:31	41.573	41.557	45.419
15:18:41	41.503	41.526	45.358
15:18:51	41.412	41.439	45.286
15:19:01	41.369	41.384	45.229
15:19:11	41.318	41.323	45.171
15:19:21	41.248	41.262	45.107
15:19:31	41.196	41.205	45.046
15:19:41	41.15	41.168	44.991
15:19:51	41.08	41.086	44.945
15:20:01	41.038	41.031	44.888
15:20:11	40.961	40.973	44.818



BBP Data			
Time	CPU	Case	Battery
12:03:54	68.406	68.844	67.033
12:04:04	68.432	68.867	67.053
12:04:14	68.476	68.911	67.108
12:04:24	68.485	68.92	67.117
12:04:34	68.517	68.92	67.147
12:04:44	68.504	68.927	67.145
12:04:54	68.527	68.913	67.149
12:05:04	68.532	68.973	67.168
12:05:14	68.584	68.978	67.213
12:05:24	68.613	69.013	67.234
12:05:34	68.616	69.031	67.257
12:05:44	68.633	69.039	67.303
12:05:54	68.683	69.089	67.324
12:06:04	68.718	69.106	67.356
12:06:14	68.721	69.121	67.364
12:06:24	68.758	69.156	67.411
12:06:34	68.767	69.158	67.423
12:06:44	68.776	69.196	67.428
12:06:54	68.741	69.138	67.45
12:07:04	68.753	69.141	67.446
12:07:14	68.663	69.081	67.407
12:07:24	68.568	68.996	67.311
12:07:34	68.475	68.909	67.262
12:07:44	68.393	68.863	67.21
12:07:54	68.28	68.79	67.149
12:08:04	68.184	68.688	67.061
12:08:14	68.062	68.598	67
12:08:24	67.954	68.479	66.905
12:08:34	67.8	68.351	66.826
12:08:44	67.664	68.205	66.732
12:08:54	67.508	68.074	66.624
12:09:04	67.329	67.965	66.544
12:09:14	67.172	67.799	66.423
12:09:24	67.003	67.613	66.339
12:09:34	66.817	67.45	66.223
12:09:44	66.593	67.267	66.121
12:09:54	66.402	67.11	66.013
12:10:04	66.213	66.813	65.885
12:10:14	66.006	66.671	65.772
12:10:24	65.777	66.496	65.664
12:10:34	65.564	66.273	65.529



NATIONAL TECHNICAL SYSTEMS

NTS Test Report Number: 41132-08.BBP

Revision 1

Time	CPU	Case	Battery
12:10:44	65.303	66.06	65.409
12:10:54	65.091	65.88	65.307
12:11:04	64.855	65.619	65.145
12:11:14	64.637	65.479	65.034
12:11:24	64.425	65.209	64.952
12:11:34	64.195	65.043	64.789
12:11:44	63.968	64.874	64.682
12:11:54	63.753	64.584	64.577
12:12:04	63.53	64.36	64.481
12:12:14	63.314	64.197	64.362
12:12:24	63.12	63.962	64.278
12:12:34	62.925	63.825	64.159
12:12:44	62.71	63.499	64.043
12:12:54	62.46	63.318	63.94
12:13:04	62.225	63.116	63.791
12:13:14	62.031	62.956	63.646
12:13:24	61.807	62.768	63.574
12:13:34	61.656	62.541	63.463
12:13:44	61.474	62.205	63.398
12:13:54	61.324	62.092	63.301
12:14:04	61.191	62.025	63.222
12:14:14	61.016	61.882	63.161
12:14:24	60.842	61.692	63.049
12:14:34	60.693	61.532	62.941
12:14:44	60.539	61.343	62.909
12:14:54	60.349	61.206	62.796
12:15:04	60.236	61.084	62.72
12:15:14	60.078	60.853	62.624
12:15:24	59.944	60.737	62.555
12:15:34	59.775	60.573	62.473
12:15:44	59.632	60.443	62.398
12:15:54	59.393	60.199	62.231
12:16:04	59.259	60.047	62.118
12:16:14	59.09	59.9	62.048
12:16:24	59.018	59.795	61.995
12:16:34	58.876	59.533	61.923
12:16:44	58.73	59.474	61.845
12:16:54	58.649	59.377	61.789
12:17:04	58.527	59.248	61.707
12:17:14	58.42	59.114	61.637
12:17:24	58.344	59	61.55
12:17:34	58.22	58.904	61.502



NATIONAL TECHNICAL SYSTEMS

NTS Test Report Number: 41132-08.BBP

Revision 1

Time	CPU	Case	Battery
12:17:44	58.111	58.785	61.459
12:17:54	57.959	58.556	61.342
12:18:04	57.793	58.456	61.228
12:18:14	57.651	58.315	61.108
12:18:24	57.523	58.155	61.004
12:18:34	57.422	57.991	60.948
12:18:44	57.273	57.855	60.853
12:18:54	57.163	57.736	60.778
12:19:04	57.068	57.605	60.636
12:19:14	56.946	57.462	60.615
12:19:24	56.798	57.338	60.514
12:19:34	56.718	57.225	60.425
12:19:44	56.64	57.073	60.315
12:19:54	56.465	57.008	60.282
12:20:04	56.388	56.829	60.184
12:20:14	56.245	56.746	60.066
12:20:24	56.12	56.595	59.989
12:20:34	55.984	56.451	59.857
12:20:44	55.824	56.25	59.74
12:20:54	55.736	56.137	59.667
12:21:04	55.629	56.065	59.598
12:21:14	55.562	55.95	59.534
12:21:24	55.461	55.772	59.43
12:21:34	55.339	55.677	59.34
12:21:44	55.22	55.537	59.251
12:21:54	55.116	55.457	59.171
12:22:04	55.001	55.374	59.097
12:22:14	54.917	55.198	58.978
12:22:24	54.81	55.059	58.886
12:22:34	54.685	54.97	58.811
12:22:44	54.584	54.863	58.719
12:22:54	54.472	54.77	58.645
12:23:04	54.368	54.634	58.553
12:23:14	54.278	54.548	58.455
12:23:24	54.195	54.423	58.345
12:23:34	54.081	54.273	58.309
12:23:44	53.945	54.188	58.143
12:23:54	53.836	54.004	58.063
12:24:04	53.72	53.918	58.01
12:24:14	53.643	53.731	57.912
12:24:24	53.533	53.672	57.831
12:24:34	53.438	53.582	57.727



NATIONAL TECHNICAL SYSTEMS

NTS Test Report Number: 41132-08.BBP

Revision 1

Time	CPU	Case	Battery
12:24:44	53.337	53.547	57.671
12:24:54	53.26	53.416	57.579
12:25:04	53.153	53.315	57.49
12:25:14	53.075	53.238	57.43
12:25:24	52.93	53.051	57.295
12:25:34	52.763	52.918	57.149
12:25:44	52.7	52.802	57.082
12:25:54	52.598	52.728	57.037
12:26:04	52.556	52.653	56.961
12:26:14	52.452	52.519	56.86
12:26:24	52.339	52.448	56.756
12:26:34	52.271	52.329	56.682
12:26:44	52.17	52.243	56.578
12:26:54	52.01	52.134	56.479
12:27:04	51.897	51.999	56.381
12:27:14	51.79	51.878	56.256
12:27:24	51.689	51.747	56.158
12:27:34	51.625	51.671	56.103
12:27:44	51.549	51.602	56.039
12:27:54	51.414	51.472	55.924
12:28:04	51.347	51.444	55.859
12:28:14	51.258	51.31	55.785
12:28:24	51.172	51.2	55.678
12:28:34	51.085	51.087	55.556
12:28:44	50.99	51.04	55.509
12:28:54	50.889	50.888	55.407
12:29:04	50.785	50.817	55.354
12:29:14	50.619	50.706	55.187
12:29:24	50.495	50.44	55.071
12:29:34	50.412	50.399	54.997
12:29:44	50.317	50.342	54.89
12:29:54	50.217	50.171	54.805
12:30:04	50.122	50.096	54.738
12:30:14	50.068	50.023	54.644
12:30:24	49.969	49.991	54.585
12:30:34	49.894	49.884	54.502
12:30:44	49.77	49.774	54.383
12:30:54	49.689	49.661	54.32
12:31:04	49.559	49.623	54.219
12:31:14	49.502	49.474	54.13
12:31:24	49.395	49.447	54.035
12:31:34	49.306	49.269	53.946



NATIONAL TECHNICAL SYSTEMS

NTS Test Report Number: 41132-08.BBP

Revision 1

Time	CPU	Case	Battery
12:31:44	49.246	49.201	53.904
12:31:54	49.14	49.097	53.797
12:32:04	49.04	48.978	53.717
12:32:14	48.94	48.945	53.628
12:32:24	48.842	48.789	53.551
12:32:34	48.76	48.671	53.429
12:32:44	48.644	48.552	53.313
12:32:54	48.542	48.489	53.251
12:33:04	48.48	48.396	53.175
12:33:14	48.405	48.313	53.099
12:33:24	48.309	48.223	53.032
12:33:34	48.181	48.119	52.925
12:33:44	48.108	48.01	52.856
12:33:54	48.008	47.906	52.738
12:34:04	47.883	47.813	52.635
12:34:14	47.822	47.69	52.601
12:34:24	47.658	47.61	52.452
12:34:34	47.561	47.475	52.347
12:34:44	47.479	47.382	52.271
12:34:54	47.339	47.291	52.144
12:35:04	47.254	47.191	52.061
12:35:14	47.126	47.061	51.935
12:35:24	47.029	46.888	51.831
12:35:34	46.904	46.842	51.747
12:35:44	46.828	46.733	51.652
12:35:54	46.737	46.65	51.602
12:36:04	46.643	46.541	51.513
12:36:14	46.544	46.45	51.4
12:36:24	46.481	46.408	51.341
12:36:34	46.435	46.291	51.3
12:36:44	46.325	46.242	51.19
12:36:54	46.237	46.111	51.104
12:37:04	46.164	46.063	51.011
12:37:14	46.048	45.944	50.928
12:37:24	45.991	45.877	50.83
12:37:34	45.884	45.77	50.771
12:37:44	45.781	45.633	50.676
12:37:54	45.665	45.557	50.604
12:38:04	45.583	45.457	50.509
12:38:14	45.507	45.408	50.393
12:38:24	45.385	45.274	50.343
12:38:34	45.285	45.158	50.218



NATIONAL TECHNICAL SYSTEMS

NTS Test Report Number: 41132-08.BBP

Revision 1

Time	CPU	Case	Battery
12:38:44	45.176	45.039	50.1
12:38:54	45.033	44.9	50.018
12:39:04	44.969	44.792	49.9
12:39:14	44.857	44.731	49.816
12:39:24	44.784	44.664	49.721
12:39:34	44.668	44.575	49.638
12:39:44	44.601	44.472	49.561
12:39:54	44.525	44.405	49.486
12:40:04	44.45	44.338	49.415
12:40:14	44.374	44.256	49.344
12:40:24	44.293	44.174	49.254
12:40:34	44.217	44.101	49.164
12:40:44	44.147	44.024	49.119
12:40:54	44.059	43.945	49.022
12:41:04	44.01	43.845	48.934
12:41:14	43.891	43.787	48.852
12:41:24	43.812	43.653	48.751
12:41:34	43.706	43.565	48.69
12:41:44	43.666	43.501	48.599
12:41:54	43.553	43.415	48.517
12:42:04	43.493	43.3	48.435
12:42:14	43.398	43.278	48.344
12:42:24	43.322	43.117	48.267
12:42:34	43.225	43.056	48.176
12:42:44	43.133	42.944	48.085
12:42:54	43.063	42.919	48.003
12:43:04	42.981	42.81	47.939
12:43:14	42.899	42.746	47.85
12:43:24	42.829	42.7	47.774
12:43:34	42.741	42.597	47.689
12:43:44	42.674	42.484	47.619
12:43:54	42.604	42.445	47.534
12:44:04	42.537	42.396	47.458
12:44:14	42.458	42.286	47.357
12:44:24	42.376	42.174	47.287
12:44:34	42.321	42.137	47.236
12:44:44	42.217	42.085	47.141
12:44:54	42.129	41.97	47.038
12:45:04	42.08	41.915	46.953
12:45:14	41.998	41.833	46.889
12:45:24	41.927	41.794	46.826
12:45:34	41.881	41.711	46.748



NATIONAL TECHNICAL SYSTEMS

NTS Test Report Number: 41132-08.BBP

Revision 1

Time	CPU	Case	Battery
12:45:44	41.791	41.627	46.688
12:45:54	41.769	41.589	46.637
12:46:04	41.693	41.507	46.545
12:46:14	41.566	41.353	46.444
12:46:24	41.457	41.282	46.331
12:46:34	41.366	41.181	46.231
12:46:44	41.314	41.114	46.152
12:46:54	41.259	41.095	46.077
12:47:04	41.255	40.999	46.06
12:47:14	41.158	40.929	45.987
12:47:24	41.115	40.91	45.924
12:47:34	41.03	40.825	45.837
12:47:44	40.972	40.767	45.737